



4.1. Physical Facilities

4.1.1 *The Institution has adequate facilities for teaching- learning. viz., classrooms, laboratories, computing equipment etc.*

Details of Enclosures:

1. *Details of area statement which includes*

a. *Instructional area*

b. *Administrative area*

c. *Amenity area*

2. *Architect Certificate*

3. *Photos*

a. Instructional Area in sq.m:

PROGRAMME	LEVEL	ROOM TYPE	ROOM ID/NAME	AREA OF ROOM IN SQ.M
ENGINEERING AND TECHNOLOGY	UNDER GRADUATE	Laboratory	0015B	82.61
ENGINEERING AND TECHNOLOGY	UNDER GRADUATE	Laboratory	0020A	82.75
ENGINEERING AND TECHNOLOGY	UNDER GRADUATE	Laboratory	0020B	82.75
ENGINEERING AND TECHNOLOGY	UNDER GRADUATE	Classroom	32	66.91
ENGINEERING AND TECHNOLOGY	POST GRADUATE	Classroom	35	66.91
ENGINEERING AND TECHNOLOGY	UNDER GRADUATE	Tutorial Room	38	33.4
ENGINEERING AND TECHNOLOGY	POST GRADUATE	Classroom	39	33.46
ENGINEERING AND TECHNOLOGY	UNDER GRADUATE	Laboratory	42	83.64
ENGINEERING AND TECHNOLOGY	UNDER GRADUATE	Laboratory	46	83.64
ENGINEERING AND TECHNOLOGY	UNDER GRADUATE	Seminar Hall	1006	167.29
ENGINEERING AND TECHNOLOGY	UNDER GRADUATE	Laboratory	1010	100.1
ENGINEERING AND TECHNOLOGY	UNDER GRADUATE	Classroom	1011	66.91
ENGINEERING AND TECHNOLOGY	UNDER GRADUATE	Classroom	1013	66.91
ENGINEERING AND TECHNOLOGY	UNDER GRADUATE	Classroom	1016	66.91
ENGINEERING AND TECHNOLOGY	UNDER GRADUATE	Classroom	1017	66.91
ENGINEERING AND TECHNOLOGY	POST GRADUATE	Classroom	1019	33.46
ENGINEERING AND TECHNOLOGY	POST GRADUATE	Classroom	1020	33.46
ENGINEERING AND TECHNOLOGY	POST GRADUATE	Classroom	1021	33.46
ENGINEERING AND TECHNOLOGY	UNDER GRADUATE	Classroom	1024	100.1
ENGINEERING AND TECHNOLOGY	POST GRADUATE	Classroom	1033	66.91
ENGINEERING AND TECHNOLOGY	UNDER GRADUATE	Classroom	1035	66.91
ENGINEERING AND TECHNOLOGY	UNDER GRADUATE	Classroom	1037	66.91
ENGINEERING AND TECHNOLOGY	UNDER GRADUATE	Laboratory	1038	100.1
ENGINEERING AND TECHNOLOGY	UNDER GRADUATE	Classroom	1043	66.91

ENGINEERING AND TECHNOLOGY	UNDER GRADUATE	Laboratory	1044	100.1
ENGINEERING AND TECHNOLOGY	UNDER GRADUATE	Laboratory	2006A	83.64
ENGINEERING AND TECHNOLOGY	UNDER GRADUATE	Laboratory	2006B	83.64
ENGINEERING AND TECHNOLOGY	UNDER GRADUATE	Laboratory	2010	100.1
ENGINEERING AND TECHNOLOGY	POST GRADUATE	Classroom	2011	66.91
ENGINEERING AND TECHNOLOGY	UNDER GRADUATE	Tutorial Room	2014	66.91
ENGINEERING AND TECHNOLOGY	UNDER GRADUATE	Classroom	2016	66.91
ENGINEERING AND TECHNOLOGY	UNDER GRADUATE	Classroom	2019	66.91
ENGINEERING AND TECHNOLOGY	UNDER GRADUATE	Classroom	2020	66.91
ENGINEERING AND TECHNOLOGY	POST GRADUATE	Classroom	2027	33.46
ENGINEERING AND TECHNOLOGY	POST GRADUATE	Classroom	2028	33.46
ENGINEERING AND TECHNOLOGY	UNDER GRADUATE	Classroom	2030	66.91
ENGINEERING AND TECHNOLOGY	UNDER GRADUATE	Classroom	2033	66.91
ENGINEERING AND TECHNOLOGY	UNDER GRADUATE	Classroom	2035	66.91
ENGINEERING AND TECHNOLOGY	UNDER GRADUATE	Classroom	2037	66.91
ENGINEERING AND TECHNOLOGY	UNDER GRADUATE	Laboratory	2038	100.1
ENGINEERING AND TECHNOLOGY	UNDER GRADUATE	Classroom	2042	66.91
ENGINEERING AND TECHNOLOGY	UNDER GRADUATE	Classroom	2044	66.91
ENGINEERING AND TECHNOLOGY	UNDER GRADUATE	Seminar Hall	A003	133.82
ENGINEERING AND TECHNOLOGY	UNDER GRADUATE	Classroom	A004	89.22
ENGINEERING AND TECHNOLOGY	UNDER GRADUATE	Classroom	A006	89.22
ENGINEERING AND TECHNOLOGY	POST GRADUATE	Laboratory	A008	89.22
ENGINEERING AND TECHNOLOGY	UNDER GRADUATE	Seminar Hall	A102	133.83
ENGINEERING AND TECHNOLOGY	UNDER GRADUATE	Tutorial Room	A104	89.22
ENGINEERING AND TECHNOLOGY	UNDER GRADUATE	Drawing Hall	A106	178.44
ENGINEERING AND TECHNOLOGY	POST GRADUATE	Seminar Hall	A202	133.83
ENGINEERING AND TECHNOLOGY	UNDER GRADUATE	Tutorial Room	A204	89.22

TECHNOLOGY				
ENGINEERING AND TECHNOLOGY	UNDER GRADUATE	Classroom	A206	89.22
ENGINEERING AND TECHNOLOGY	UNDER GRADUATE	Classroom	A208	89.22
ENGINEERING AND TECHNOLOGY	UNDER GRADUATE	Laboratory	A210C	66.91
ENGINEERING AND TECHNOLOGY	UNDER GRADUATE	Laboratory	A210D	66.91
ENGINEERING AND TECHNOLOGY	UNDER GRADUATE	Tutorial Room	A214	89.22
ENGINEERING AND TECHNOLOGY	UNDER GRADUATE	Classroom	A217	89.22
ENGINEERING AND TECHNOLOGY	UNDER GRADUATE	Tutorial Room	A218	44.6
ENGINEERING AND TECHNOLOGY	UNDER GRADUATE	Tutorial Room	A219	44.6
ENGINEERING AND TECHNOLOGY	UNDER GRADUATE	Laboratory	A220A	150.9
ENGINEERING AND TECHNOLOGY	UNDER GRADUATE	Classroom	A221	133.83
ENGINEERING AND TECHNOLOGY	UNDER GRADUATE	Classroom	A224	89.22
ENGINEERING AND TECHNOLOGY	UNDER GRADUATE	Classroom	A226	89.22
ENGINEERING AND TECHNOLOGY	POST GRADUATE	Seminar Hall	A303	133.82
ENGINEERING AND TECHNOLOGY	UNDER GRADUATE	Tutorial Room	A304	89.22
ENGINEERING AND TECHNOLOGY	UNDER GRADUATE	Classroom	A306	89.22
ENGINEERING AND TECHNOLOGY	UNDER GRADUATE	Classroom	A309	89.22
ENGINEERING AND TECHNOLOGY	POST GRADUATE	Laboratory	A310A	66.91
ENGINEERING AND TECHNOLOGY	POST GRADUATE	Laboratory	A310B	66.91
ENGINEERING AND TECHNOLOGY	UNDER GRADUATE	Laboratory	A310C	66.91
ENGINEERING AND TECHNOLOGY	UNDER GRADUATE	Laboratory	A310D	66.91
ENGINEERING AND TECHNOLOGY	UNDER GRADUATE	Tutorial Room	A314	89.22
ENGINEERING AND TECHNOLOGY	UNDER GRADUATE	Classroom	A317	89.22
ENGINEERING AND TECHNOLOGY	UNDER GRADUATE	Classroom	A319	89.22
ENGINEERING AND TECHNOLOGY	POST GRADUATE	Seminar Hall	A320	188.89
ENGINEERING AND TECHNOLOGY	UNDER GRADUATE	Classroom	A324	89.22
ENGINEERING AND TECHNOLOGY	POST GRADUATE	Seminar Hall	A327	133.83

ENGINEERING AND TECHNOLOGY	UNDER GRADUATE	Tutorial Room	A328	86.27
ENGINEERING AND TECHNOLOGY	POST GRADUATE	Research Laboratory	P003	86.43
ENGINEERING AND TECHNOLOGY	POST GRADUATE	Research Laboratory	P005	86.43
ENGINEERING AND TECHNOLOGY	UNDER GRADUATE	Laboratory	P011	86.43
ENGINEERING AND TECHNOLOGY	UNDER GRADUATE	Laboratory	P013	86.43
ENGINEERING AND TECHNOLOGY	POST GRADUATE	Laboratory	P017	290.84
ENGINEERING AND TECHNOLOGY	POST GRADUATE	Laboratory	P317	145.45
ENGINEERING AND TECHNOLOGY	UNDER GRADUATE	Laboratory	P322	145.45
ENGINEERING AND TECHNOLOGY	UNDER GRADUATE	Workshop	W1	297.4
ENGINEERING AND TECHNOLOGY	UNDER GRADUATE	Laboratory	W10A	142.56
ENGINEERING AND TECHNOLOGY	UNDER GRADUATE	Laboratory	W10B	144.83
ENGINEERING AND TECHNOLOGY	UNDER GRADUATE	Laboratory	W11A	156.84
ENGINEERING AND TECHNOLOGY	UNDER GRADUATE	Laboratory	W11B	157.1
ENGINEERING AND TECHNOLOGY	UNDER GRADUATE	Laboratory	W2	297.4
ENGINEERING AND TECHNOLOGY	UNDER GRADUATE	Laboratory	W3A	231
ENGINEERING AND TECHNOLOGY	UNDER GRADUATE	Laboratory	W3B	66.4
ENGINEERING AND TECHNOLOGY	UNDER GRADUATE	Laboratory	W4A	297.4
ENGINEERING AND TECHNOLOGY	UNDER GRADUATE	Laboratory	W4B	148.7
ENGINEERING AND TECHNOLOGY	UNDER GRADUATE	Laboratory	W5A	66.4
ENGINEERING AND TECHNOLOGY	UNDER GRADUATE	Laboratory	W5B	66.4
ENGINEERING AND TECHNOLOGY	UNDER GRADUATE	Additional Workshop	W5C	201.77
ENGINEERING AND TECHNOLOGY	UNDER GRADUATE	Additional Workshop	W6A	268.17
ENGINEERING AND TECHNOLOGY	UNDER GRADUATE	Laboratory	W6B	66.4
ENGINEERING AND TECHNOLOGY	UNDER GRADUATE	Additional Workshop	W7A	231
ENGINEERING AND TECHNOLOGY	UNDER GRADUATE	Laboratory	W7B	66.4
ENGINEERING AND TECHNOLOGY	UNDER GRADUATE	Laboratory	W8A	66.4
ENGINEERING AND TECHNOLOGY	UNDER GRADUATE	Laboratory	W8B	201.77

TECHNOLOGY				
ENGINEERING AND TECHNOLOGY	UNDER GRADUATE	Laboratory	W8C	66.4
ENGINEERING AND TECHNOLOGY	UNDER GRADUATE	Laboratory	W9A	268.17
ENGINEERING AND TECHNOLOGY	UNDER GRADUATE	Laboratory	W9B	66.4

b. Administrative Area (ADA) in sq.m:

S.NO	BUILDING SPACE FOR	AVAILABLE (SQ.M.)
1	Principal Office	48.33
2	Director Office	48.33
3	Board Room	33.45
4	Office all inclusive (One program)	193.308
5	Department offices	22.304
6	Cabins for Head of Departments	22.304
7	Faculty Rooms	66.914
8	Central Stores	33.45
9	Maintenance	13.382
10	Security	20
11	Housekeeping	20
12	Pantry for staff	44.6
13	Examinations Control office	100.371
14	Placement office	98.5

c. Amenity Area (AMA) in sq.m:

S.NO.	BUILDING SPACE FOR	AVAILABLE (SQ.M.)
1	Gents Toilet / Ladies Toilet	224
2	Boys Common Room	103
3	Girls Common Room	103
4	Cafeteria	297
5	Stationery Store & Reprography	33
6	First Aid cum Sick room	13
7	Principal's quarters	184
8	Guest House	206
9	Sports Club / Gymnasium	103
10	Auditorium / Amphi Theater	267
11	Boys Hostel	2811
12	Girls Hostel	2885

Library facility area in sq.m:

Area available(sq.m)	694.294
----------------------	---------

Central Computing Facility Area in sq.m.

Area available(sq.m)	167.28
----------------------	--------

Other Related Building Areas in sq.m.

SL.NO	DESCRIPTION OF THE AREA	AVAILABLE CARPET AREA (SQ.M.)
1	Kitchen and Dining Hall	200

2	Indoor games cum Common hall	150
3	Medical room (for all hostels)	50
4	Canteen	50
5	Warden office	18
6	Warden office Additional 4 rooms of 9 (sq.m.) each within the blocks	36
7	Guest rooms (2 no.s)	18
8	Guest rooms Additional 4 rooms of 9 (sq.m.) each within the blocks	36
9	Toilets	75

Facilities available

SL. NO	ITEM	AVAILABLE
1.	Conference Hall	YES
2.	Interview Room	YES
3.	OHP	YES
4.	LCD projector	YES
5.	Audio visual facilities	YES

Alumni Association

SL.NO	ALUMNI ASSOCIATION	AVAILABLE
1.	Is alumni association functioning in the college	YES

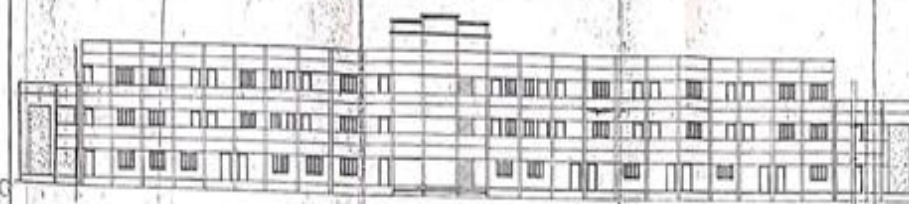
Health Centre

SL.NO.	NAME OF THE STAFF	DESIGNATION	QUALIFICATION	CONTACT NO.
1	Dr.Vivas	Doctor	M.B.B.S	9600112523 9884466130

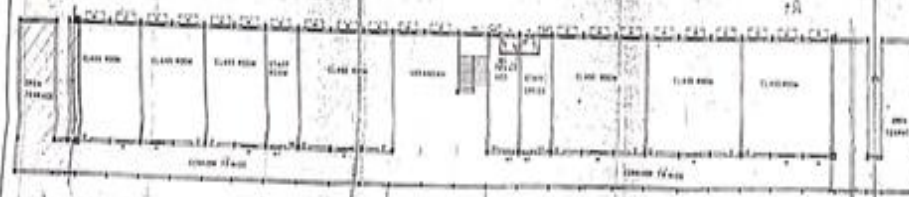
Other Amenities

SL.NO	ITEM	AVAILABLE
1.	Drinking Water facility	Yes
2.	Electric Supply	Yes
3.	Generator (min.25 KVA)	Yes
4.	Sewage Disposal	Yes
5.	Telephone facility	Yes
6.	Vehicle Parking Stand	Yes
7.	Website	Yes
8.	Barrier free built environment for disable	Yes
9.	Safety Provisions(Fire and Others)	Yes
10.	General Insurance for Assets	Yes
11.	All Weather Approach road	Yes
12.	Notice Boards	Yes
13.	Public announcement System	Yes
14.	ERP for student-institution, Parent interaction	Yes
15.	Transport facilities for staff and students	Yes
16.	Bank /extension counter facility / post	Yes
17.	CCTV Security	Yes
18.	LCD in Class Rooms	Yes
19.	Group Insurance for Employee	Yes
20.	Group Insurance for Students	Yes
21.	Staff Quarters	Yes
22.	Rain Water Harvesting Structures	Yes

PLAN SHOWING THE PROPOSED ADDITIONAL CONSTRUCTION OF PART OF
R.C.C. ROOF SECOND FLOOR OVER THE EXISTING GROUND/FIRST FLOOR
FOR MOUNTION COLLEGE OF ENGINEERING & TECHNOLOGY AT SWS 1/9A.10
AT PILIVALAM VILLAGE, THIRUVANMIYALUR, PUDUCHERRY DISTRICT



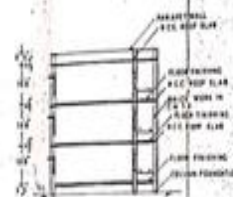
ELEVATION



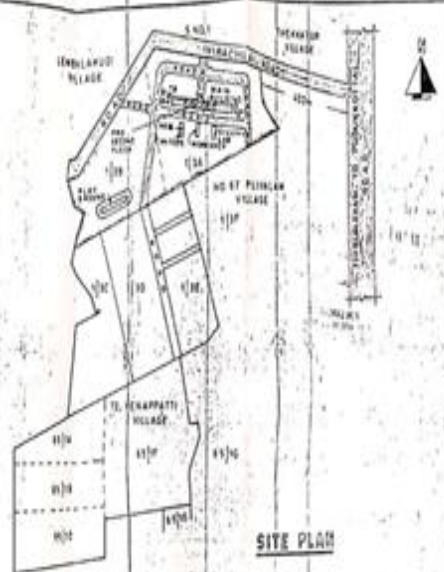
SECOND FLOOR PLAN

NOTE: STAIRCASE, FOUNDATION,
SEPTIC TANK & DISPERSED TRENCH
DETAILS AS PER EXISTING

ITEM	NO
1. Existing Ground	1000
2. First Floor	1001
3. Second Floor	1002
4. Third Floor	1003
5. Foundation	1004



SECTION ON AD

SECTION OF RAINWATER
HARVESTING PIT

SITE PLAN

AREA DETAILS	NO	NO	JOINT DETAILS	FEET	MTRE
EXISTING					
Ground floor	1000	1000	1000	1000	1000
1st Floor	1001	1001	1001	1001	1001
2nd Floor	1002	1002	1002	1002	1002
3rd Floor	1003	1003	1003	1003	1003
Foundation	1004	1004	1004	1004	1004
STAIRCASE					
1st Floor	1001	1001	1001	1001	1001
2nd Floor	1002	1002	1002	1002	1002
3rd Floor	1003	1003	1003	1003	1003
Foundation	1004	1004	1004	1004	1004

Architect Certificate

College outdoor



College outdoor



Outdoor auditorium



Indoor auditorium



HOD cabin



Faculty cabin



Class rooms



Civil Lab



Computer Lab



ECE Lab



EEE Lab



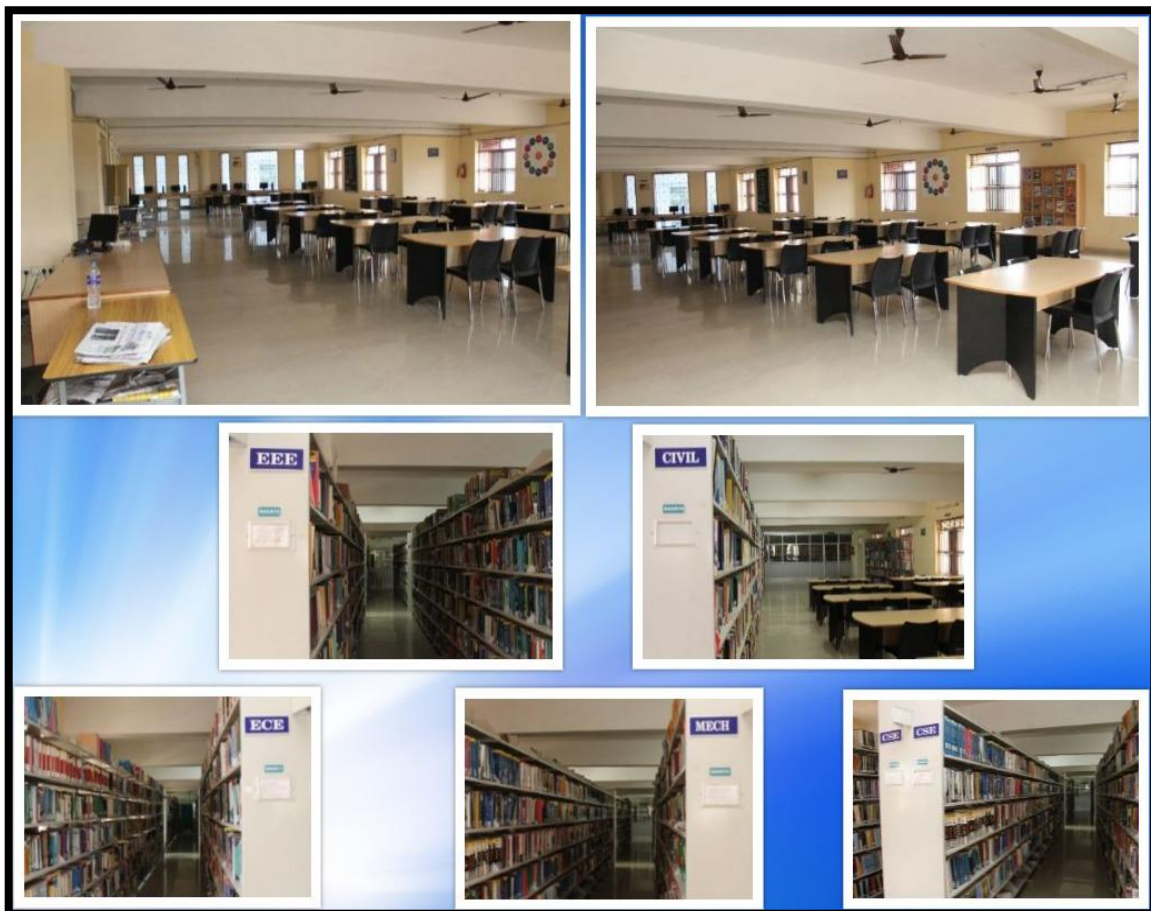
Mechanical Lab



Communication Lab



Library



Drawing Hall



Seminar Hall- I



Seminar Hall- II



Geo tagged Photo



Smart class room



Fire extinguisher facility



Generator facility



Girls Hostel



Girls Mess



Boys Canteen



Boys Hostel



Boys Mess



Boys Mess



RO Water System



Transportation



Pedestrian



UPS Facility



Wi-Fi Facility



Reprographic center and Stationery



CCTV Camera



ATM facility



Generator facility



Security facility



Green garden

